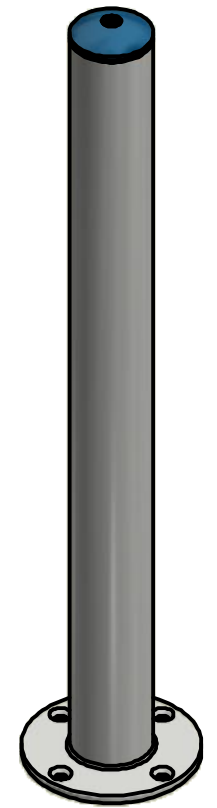
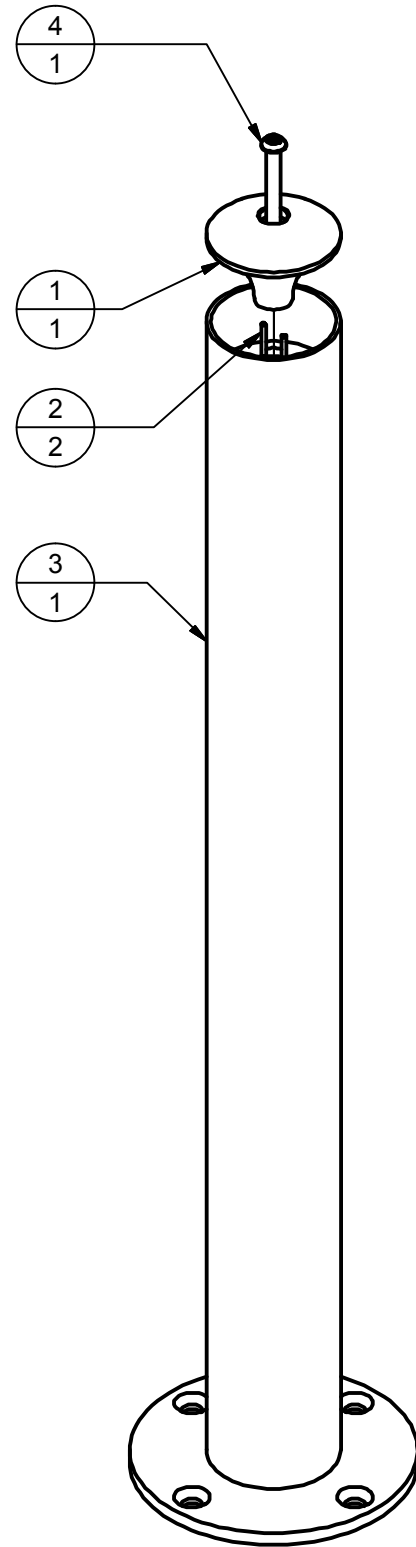
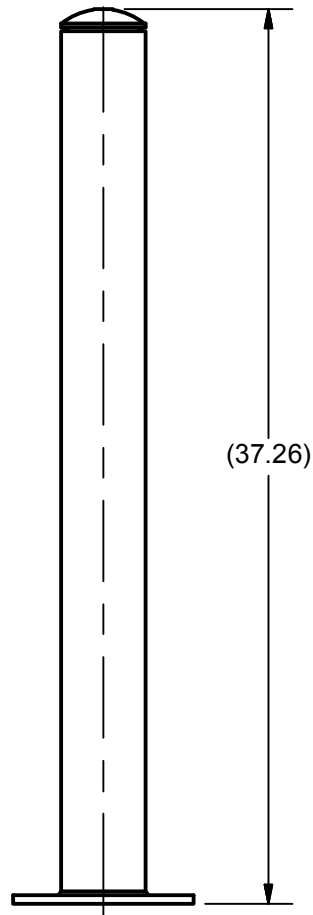
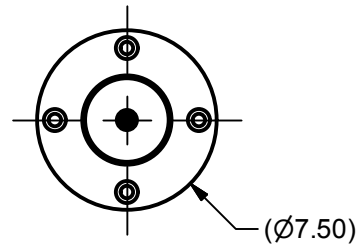


ITEM	PART ID	DESCRIPTION	MATERIAL	QTY
1	0003-1418	TOP CAP	URETHANE	1
2	0003-1609	DOWEL PIN, 1/8 DIA X 1.00 LG	AISI 316	2
3	0010-0486	COLUMN WELD ASSY	WELDED SST	1
4	0010-1434	BOLT, BUTTON HD CAP, 3/8-16 X 3.00 LG, PT	SST	1

REV	DESCRIPTION	DATE
A	INITIAL RELEASE	3/1/2016



MASS: 18.3 lbmass	TOLERANCES UNLESS NOTED .X ±0.5 .XX (>10) ±0.05 .XX (<10) ±0.01 .XXX ±0.005 ANGULAR ±1° SURFACE FINISH 63µ in. ALL DIMENSIONS IN INCHES	DESIGNED: NICMAY	FUNBRELLA ASSY			
		DRAWN: NICMAY				CHECKED: JASMAY
ALL PLANS AND DESIGNS AT ALL TIMES REMAIN THE PROPERTY OF THE WMI MANUFACTURING CORPORATION AND CANNOT BE USED OR REPRODUCED WITHOUT WRITTEN PERMISSION. 805 CROWLEY AVE. KELOWNA, BRITISH COLUMBIA CANADA, V1Y 7G6 P: 250-979-7205 F: 250-979-7215	THIRD ANGLE PROJECTION 	DATE: 2/29/2016	DWG ID: 0010-0485	REV: A	SIZE: B SCALE: NTS	SHEET: 1 OF: 1