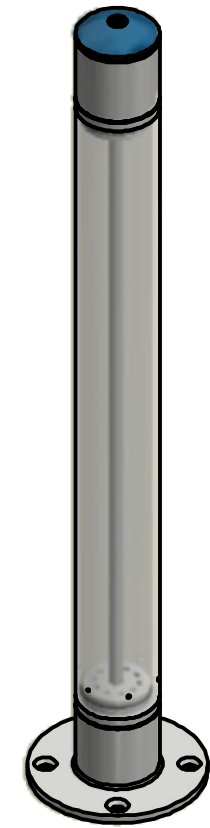
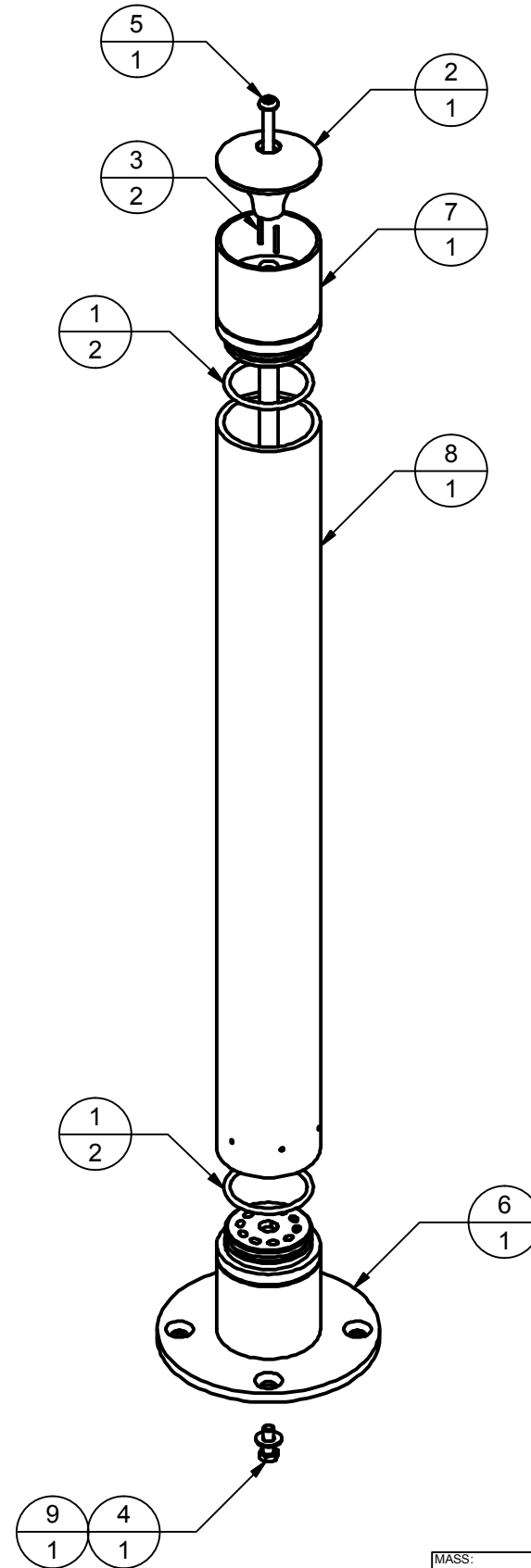
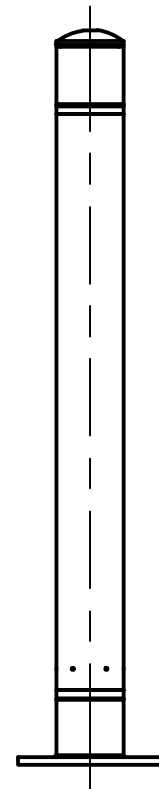
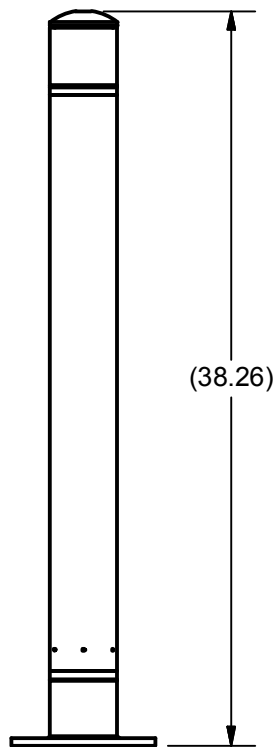
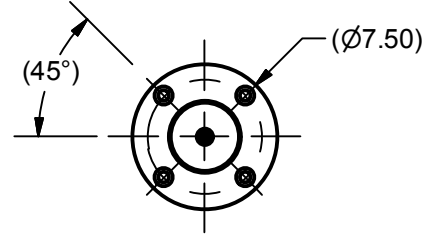


ITEM	PART ID	DESCRIPTION	MATERIAL	QTY
1	0002-9765	O-RING -334, 2.600 ID X 0.210 CS	RUBBER	2
2	0003-1418	TOP CAP	URETHANE	1
3	0003-1609	DOWEL PIN, 1/8 DIA X 1.00 LG	AISI 316	2
4	0010-0923	BOLT, HEX HD, 3/8-16 X 1.00 LG, FT	SST	1
5	0010-1434	BOLT, BUTTON HD CAP, 3/8-16 X 3.00 LG, PT	SST	1
6	0010-1526	I-SPY STORM BOTTOM WELD ASSY	WELDED SST	1
7	0010-1529	I-SPY STORM TOP WELD ASSY	WELDED SST	1
8	0010-1531	VIEWING TUBE	ACRYLIC	1
9	WAS-02031	WASHER, FLAT, 3/8 (0.88 OD)	SST	1

REV	DESCRIPTION	DATE
A	INITIAL RELEASE	9/01/2016



ALL PLANS AND DESIGNS AT ALL TIMES REMAIN THE PROPERTY OF THE WMI MANUFACTURING CORPORATION AND CANNOT BE USED OR REPRODUCED WITHOUT WRITTEN PERMISSION. 805 CROWLEY AVE. KELOWNA, BRITISH COLUMBIA CANADA, V1Y 7G6 P: 250-979-7205 F: 250-979-7215	MASS: <b>15.8 lbmass</b>	<b>TOLERANCES UNLESS NOTED</b> .X ±0.5 .XX (>10) ±0.05 .XX (<10) ±0.01 .XXX ±0.005 ANGULAR ±1° SURFACE FINISH 63µ in. <b>ALL DIMENSIONS IN INCHES</b>	DESIGNED: JASMAY DRAWN: NICMAY CHECKED: JASMAY	<b>I-SPY STORM ASSY</b>		
	DATE: 8/19/2016	DWG ID: <b>0010-1532</b>	REV: <b>A</b>	SIZE: <b>B</b>	SCALE: <b>NTS</b>	SHEET: 1 OF: 1
	THIRD ANGLE PROJECTION					